

ARTVENTURES AOTEAROA
INVITES YOU TO
SPRINGTIME IN THE SOUTHERN ALPS
NOVEMBER 18TH-24TH, 2026

A week of creativity, adventure and connection in the Southern Alps of Aotearoa, NZ.

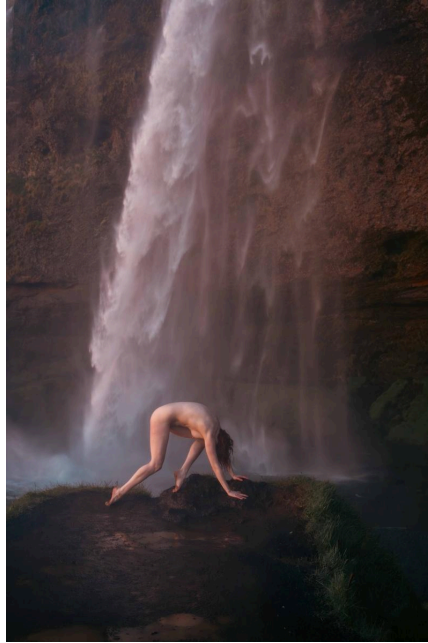


3 PROFESSIONAL, HIGHLY EXPERIENCED AND HARDWORKING ART MODELS

Saskia @saskiamuse: A nature-loving Australian fine-art model. Extremely experienced in posing on cliffs, waterfalls or curled up against gnarled roots - she is passionate about capturing the beauty of nature enhanced by the purity of the human form. We are blessed to have her beautiful energy and talent on this tour! (Photos by Carlo Righinil, @shotsbykaran and Colin Brown).



Whitney Masters @whitney.masters: A Chicago based creative with a deep love for story-telling. As a highly experienced and sought after art model, Whitney has headlined similar photography events throughout the world and we are so excited to be bringing her to our little piece of heaven in NZ! (Photos 1+2 by Niel Galen, 3 by Eric Scott).



Lucy Artmodel @lucy.artmodel: I'm Lucy, co-organiser of this retreat, and I'll be the third model. I've been modelling since 2013 and have a deep rooted love for nature's gifts, so modelling nude-in-nature has been a dream come true. Exploring the magical landscapes of Aotearoa with my partner Tristan and creating art while at it has inspired me profoundly over the years. I'm excited to share this magic with you too, and to model alongside incredible talent for in this special part of the world! (Photos: Tristan (co-organiser, Deekay Images from previous tour, and Ron Chez)



Cost: \$6,500 NZD if signed up by end of February 2026.
After February 2026: \$6,800.

To sign up, we require a 30% deposit to secure your spot. International transfers are preferred via Wise (we can organise something else if this isn't possible). From there, payments can be made in installments up until end of October, 2026.



Accommodation:

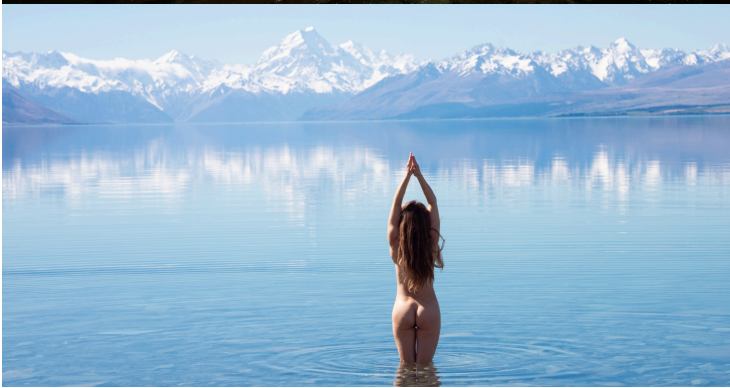
[Mountain Range Lodge Wanaka.](#)

A spacious and stylish airbnb for the whole crew - each room with its own ensuite bathroom, mountain views, a cosy fireplace and great communal areas. Beautiful for shooting if/when the weather isn't cooperating for outdoors.





Location Examples





FAQ

Q. What is the pick up and drop off location?

A. Queenstown Airport (or city) unless you prefer to make your own way and meet in Wanaka.

Q. How much hiking do we do?

A. There is some light hiking/walking involved in our events. Locations range from a 10 min walk total, up to 25 minutes or so each way at the most. None of the locations require strenuous uphill walking. Some spots may involve some scrambling or walking across some water (nothing dangerous and we will always be there to help hold items/hands/etc). We work as a team to make sure everyone stays safe.

Q. Can I bring my partner?

A. Non-shooting partners are very welcome! We've had many join us. We have a \$900 NZD partner add on fee to cover the extra costs.

Q. What if I need to cancel?

A. Cancellation Policy: In the event of a cancellation, we will try our best to fill in your spot. If we can fill the spot, your fee will be refunded (minus transaction/admin fees). If we are unable to fill the spot, payments will be non-refundable, so please ensure your commitment. If it is close to the event when you cancel, we may have to offer the place at a discounted rate to try and fill the spot last minute - in this case we would refund you back the amount the replacement paid.

Q. Will we have time for sightseeing/other activities outside of shooting?

A. As our schedule is quite busy on our shooting days, we include one full day of rest and recovery in the middle to ensure everyone can be at their best. On this day we may organise a group activity or you are welcome to plan any activities. You may also be able to organise a 1-on-1 shoot with one of the models

Q. How much shooting do we do?

A. We have a 2 hour introductory shoot on the first day. On the other days we will shoot for 4-5 hours at times with good light. This doesn't include the driving involved getting to locations so it ends up being a big day, hence having the day off in the middle. On the final day, we generally have a nice relaxed morning with a good breakfast, check out and head to the airport to say goodbye's.

Any other questions? Feel free to reach out to Lucy by email:
lucy.artmodel@gmail.com